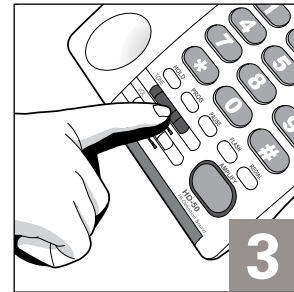
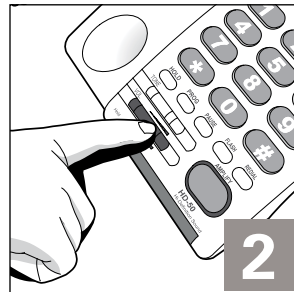
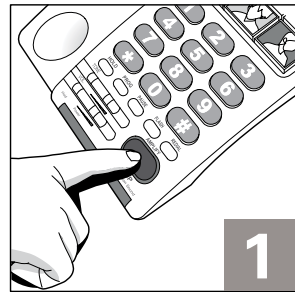


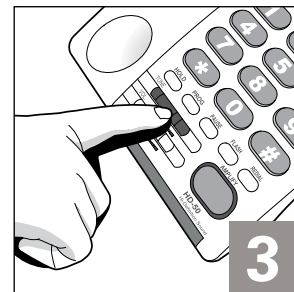
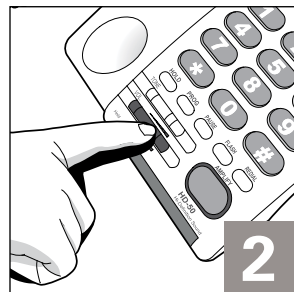
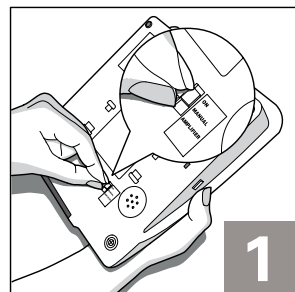
Amplifying Incoming Sounds Manually

1. When you are on the phone, press the Amplify button to turn on the amplifier (it will light up).
2. Adjust the Volume switch to reach a comfortable sound level.
3. Adjust the Tone switch until you can hear the incoming voice clearly. This needs to be done the first time you use the phone only and you can leave this setting for all future calls.



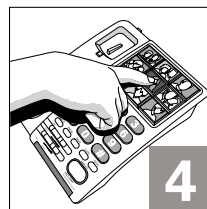
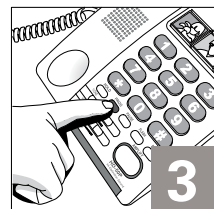
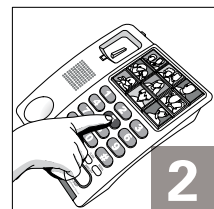
Amplifying Incoming Sounds Automatically

1. Slide the Amplifier Auto On/OFF switch on the underside to the On position.
2. While on the phone, adjust the Volume switch to reach a comfortable sound level.
3. Adjust the Tone switch until you can hear the incoming voice clearly. This needs to be done the first time you use the phone only and you can leave this setting for all future calls.
4. The telephone will return to the same amplifier setting automatically every time you use the phone.
5. To turn off the amplifier (for the non hard-of-hearing user), just press the Amplify button. To return to the previous setting, press the Amplify again.



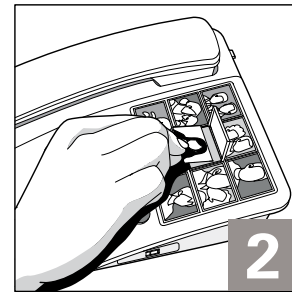
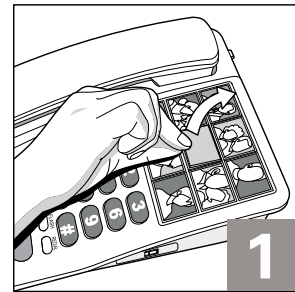
Programming Number for One-Touch Memory Dialing

1. Lift the handset, press PROG.
2. Dial the phone number you wish to save (maximum of 15 digits).
3. Press PROG again.
4. Press the memory button you wish to store the phone number, then hang up the phone.



Inserting Photos In Memory Buttons

Cut your photos using the template provided as a guide. Lift the transparent cover of the memory button and insert the photo. Replace the cover when finished.



Trouble Shooting

If you encounter any difficulties, please check the following before calling our Customer Care Department for assistance.

The phone does not ring or rings very soft when there is an incoming call – check and make sure the ringer volume switch on the side of the phone is set to HI or MED. If this switch is set to LO, the phone rings very soft.

No Dial Tone –

1. Check and make sure all the phone cords are connected properly and securely.
2. Make sure the phone wall outlet is working properly by trying the phone with another phone wall outlet.
3. If there is still no dial tone, there may be a problem with your phone line and you need to contact your telephone company.
4. If there is dial tone on another telephone in your house, there may be a problem with this phone and contact our Customer Care Department for assistance.

Warranty Service Information

Your HD Phone comes with one-year limited warranty. We warrant during this warranty period, from the date of purchase, to the original consumer, the HD Phone to be free from defects in materials and workmanship under intended home use. In the event that HD Phone fails to function properly within one year of original purchase due to defects in materials or workmanship, return the unit (freight prepaid) with proof of purchase (sales receipt or packing slip, no exceptions) to Serene Innovations. Serene Innovations will either repair or replace the unit (with a refurbished unit or unit of equal condition) and return it to you (using UPS/USPS ground shipping) at no cost to you if the unit is returned within 30 days of purchase. If the unit is returned after 30 days of purchase but within the warranty period, there will be a warranty handling charge of \$9.95 for each return.

This warranty does not apply to any product that has been accidentally damaged, abused, misused or negligent, used on electrical frequency or voltage other than marked on product and/or described in manual. Defects or errors caused by unauthorized alterations, repairs, and/or tampering are also not covered by this warranty. This Warranty gives you specific legal rights, and you may also have other legal rights that vary from states to states.

If a defect covered by this warranty should occur, promptly contact a Customer Care Representative by phone or log onto www.sereneinnovations.com to obtain a Return Authorization Number (RAN) and shipping instructions before shipping the product to us. Any shipment without a RAN will not be accepted and will be returned to you at your expense. Any authorized returned product must be accompanied with proof of purchase and a brief explanation of the problem. For out of warranty repaired and service, please contact our Customer Care Department for directions.

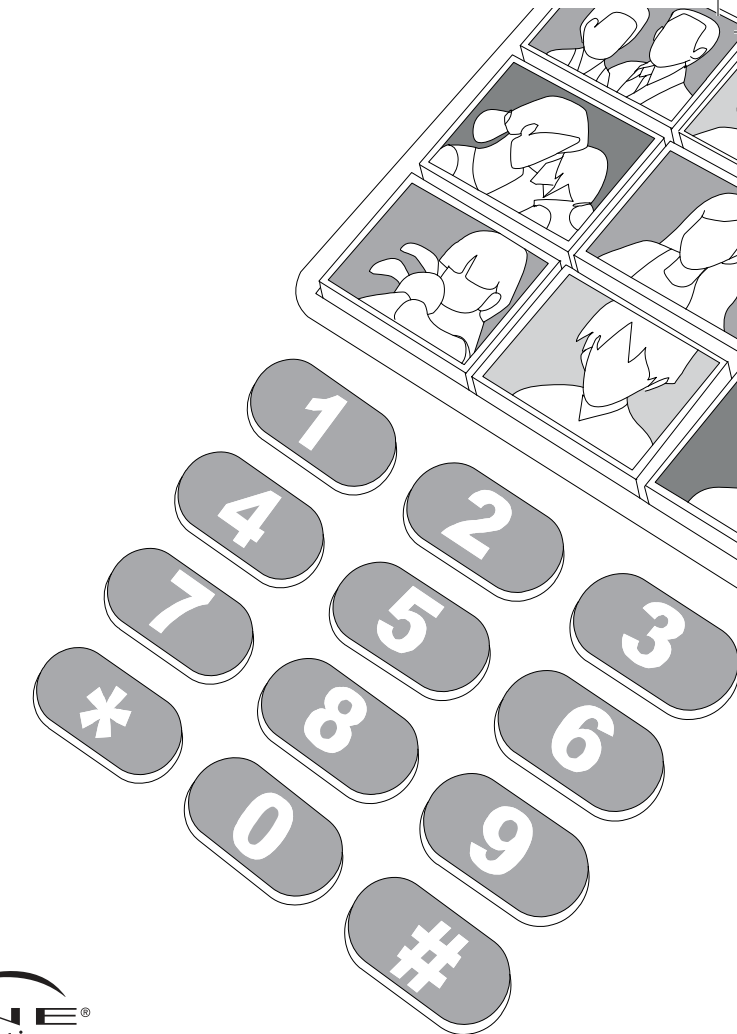


HIGH-DEFINITION Amplified Telephone

Operating Guide
Model HD-30P
with **Photo Memories**

Serene Innovations, Inc.
13425 Pumice Street
Norwalk, Ca. 90650
(562) 407-5400
www.sereneinnovations.com

Copyright © 2007 Serene Innovations, Inc. All rights reserved. 03-07 ▲



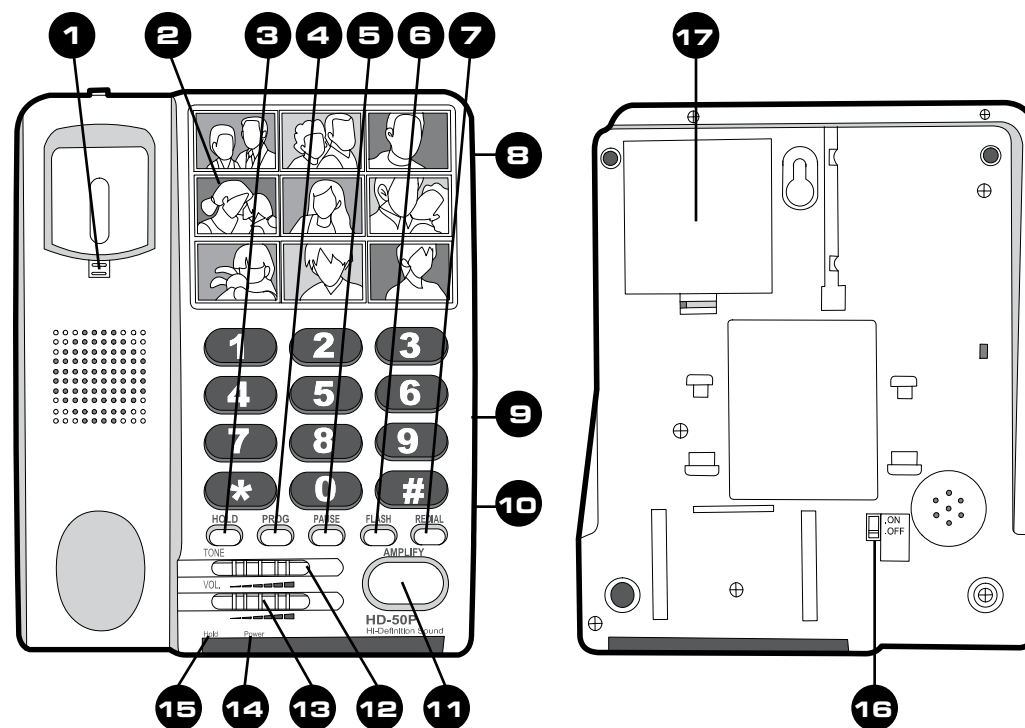
Important Safety Instructions

Instructions pertaining to a risk of fire, electric shock or injury to persons.

WARNING – When using electric appliances, basic precautions should always be followed, including the following:

1. Read all the instructions before using the appliance.
2. To reduce the risk of injury, close supervision is necessary when an appliance is used near children.
3. Do not contact moving parts or any exposed metal surface.
4. Only use attachments recommended or sold by the manufacturer.
5. Do not use outdoors. Do not use near water.
6. To disconnect, turn all controls to the off position, then remove plug from outlet.
7. Do not unplug by pulling on cord. To unplug, grasp the plug, not the cord.
8. Unplug from outlet when not in use and before servicing or cleaning.
9. Do not operate any appliance with a damaged cord or plug, or after the appliance malfunctions or is dropped or damaged in any manner. Return appliance to the nearest authorized service facility for examination, repair, or electrical or mechanical adjustment.
10. To Reduce the Risk of Electric Shock, this appliance has a polarized plug (one blade is wider than the other). This plug will fit in a polarized outlet only one way. If the plug does not fit fully in the outlet, reverse the plug. If it still does not fit, contact a qualified electrician to install the proper outlet. Do not change the plug in any way.
11. Avoid using any telephone product during an electrical storm. There may be a remote risk of electric shock from lightning.
12. Do not use the telephone to report a gas leak in the vicinity of the leak.

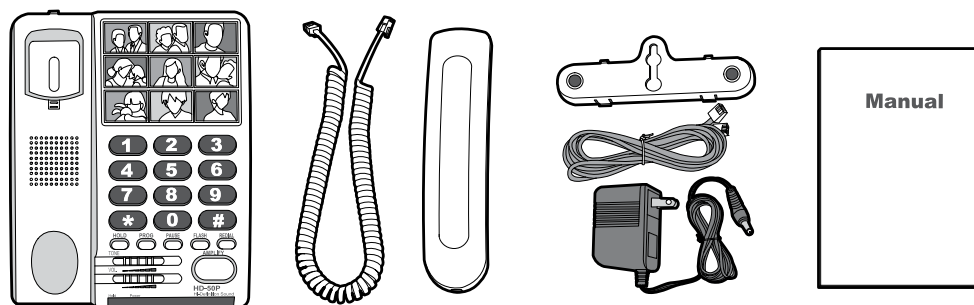
Feature Identification



1. Handset hook (for wall mounting use only).
2. One-touch memory dialing buttons.
3. Hold (press to put call on hold and to mute the handset, lift the handset or a quick press of the hook switch releases the Hold).
4. Prog (press to program number into memory).
5. Pause (press to put a pause in a string of dialing numbers when programming such as between your long distance service and the number you are dialing).
6. Flash (press to switch between current call and the call waiting).
7. Redial (press to redial the last dialed number).
8. Audio output jack (for connection to neck-loop and other assistive listening device).
9. Ringer Volume (to select a ringing volume level to suit your hearing).
10. Ringer Tone (to select a ring tone to suit your hearing).
11. Amplify (press to turn on/off the amplifier manually).
12. Tone (to enhance speech clarity; move it until you hear the best incoming speech clarity while on the phone. Positions 1 thru 4 enhance low, mid, mid-high, and high tone part of the speech respectively).
13. Volume (to adjust the volume of the handset).
14. Power on indicator to show you that the AC adapter is properly inserted.
15. Call-on-hold visual indicator.
16. Amplifier Auto On/Off (On: the amplifier will come on automatically and return to the previous level setting every time you lift the handset. Off: the amplifier will not come on automatically; you must press Amplify to turn on the amplifier).
17. Battery compartment (install 4 AA batteries as back-up power to operate all the functions of the telephone during power outage. If no battery is installed, the phone will only function as an ordinary telephone (without amplification/tone control functions) when there is a power outage).

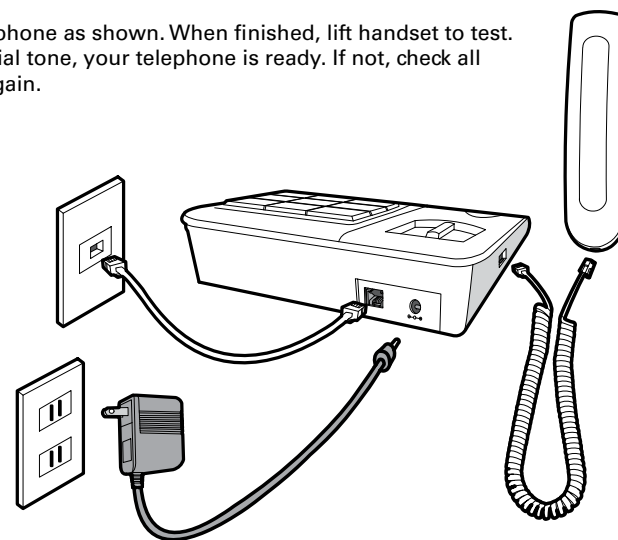
Package Content

Your package includes all the items as shown here. If there is anything missing, please contact our Customer Care Department immediately.



Connection

Connect your phone as shown. When finished, lift handset to test. If you hear a dial tone, your telephone is ready. If not, check all connections again.



Wall Mounting

1. Slide out the handset hook, turn it upside down and reinsert. This hook keeps the handset in place when wall mounted.
2. Fit the wall mount bracket into the base of the phone.
3. Connect the short phone cord. Align and put the mounting holes over the heads of the wall plate screws (make sure the screw head protrude enough, if not, use a screw driver to adjust) and slide the phone downward slightly to lock the phone in place.

