

Wi-Fi Cloud-Based Video Camera for Home and Business

Caméra vidéo Wi-Fi Cloud basé pour le domicile et le travail
Videocámara wifi para el hogar y la empresa
Wifi Cloud-basierte Video-Kamera für Home und Business

iLuv
Designed by iLuv in New York

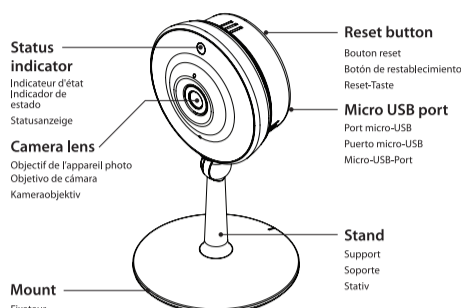
mySight™

Quick Start Guide (Device installation)

Guide de démarrage rapide (Installation de l'appareil)

Guía de inicio rápido (Instalación del dispositivo)

Kurzanleitung (Gerätinstallation)



Status indicator
Indicateur d'état
Indicador de estado
Statusanzeige

Camera lens
Objectif de l'appareil photo
Objetivo de cámara
Kameraobjektiv

Mount
Fixateur
Acople
Halterung

Reset button

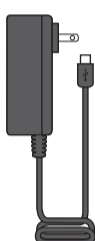
Bouton reset
Botón de restablecimiento
Reset-Taste

Micro USB port

Port micro-USB
Puerto micro-USB
Micro-USB-Port

Stand

Support
Soporte
Stativ



Global tech support information

EN For troubleshooting and technical support, please email support@ivideon.com or call the following toll free numbers:

FR Pour contacter le service de dépannage ou l'assistance technique, veuillez envoyer un e-mail à support@ivideon.com ou appeler les numéros gratuits suivants :

ES Para la resolución de problemas y asistencia técnica, por favor, envíe un e-mail a support@ivideon.com o llame a los siguientes números gratuitos:

DE Zur Problembeseitigung und für technischen Support senden Sie bitte eine E-Mail an support@ivideon.com oder rufen Sie die folgenden gebührenfreien Telefonnummern an:

Email: support@ivideon.com

Phone: (English Only)

US Toll Free: +1-888-683-8950

Great Britain: +44 330 8080350

Germany: +49 3222 1094781

France: +33 977 550686

Spain: +34 902 906072

Italy: +39 069 4801515

Poland: +48 223 075105

Lithuania: +370 521 40504

Latvia: +371 661 63762

Austria: +43 720 884335

Belgium: +32 784 83945

Netherlands: +31 858 886678

Estonia: +37 266 80345

Portugal: +35 1308 805737

Sweden: +46 108 848917

Finland: +35 8753 252949

Greece: +302 111 985163



There are two ways to set up mySight™:

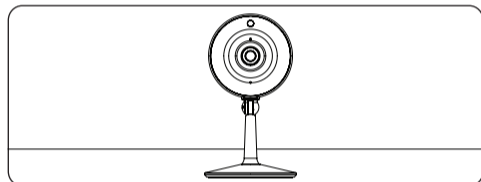
Il y a deux possibilités d'accrocher mySight™:

Hay dos formas de instalar mySight™:

mySight™ lässt sich auf zwei Arten befestigen:

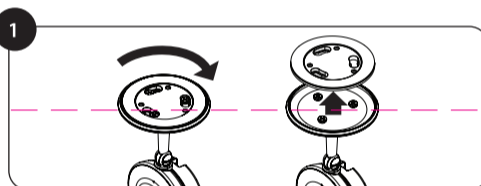
• Place on a flat surface

Mettez sur une surface plane / Situálo en una superficie plana / Auf einer ebenen Fläche aufstellen



• Mount to a wall

Fixer à un mur / Montarlo en una pared / An einer Wand befestigen

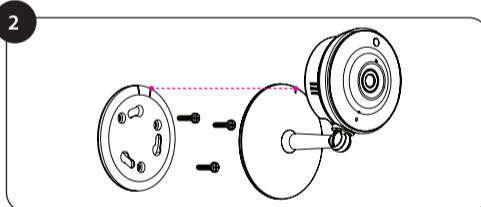


Hold mySight™ upside down. Attached to the bottom of the stand is the wall mount (black color). Turn it clockwise to detach it, then remove it.

Tenez mySight™ à l'envers. Le support mural est attaché au bas du socle (couleur noire). Tournez-le dans le sens des aiguilles d'une montre pour le détacher, retirez-le ensuite.

Sostenga mySight™ boca abajo. En la parte inferior del pie está el soporte para la pared (de color negro). Gírelo en sentido de las agujas del reloj para separarlo y retírelo.

Halten Sie mySight™ mit der Oberseite nach unten. An der Unterseite des Stativs befindet sich die Wandhalterung (schwarz). Drehen Sie sie im Uhrzeigersinn, um sie zu lösen, und entfernen Sie sie.

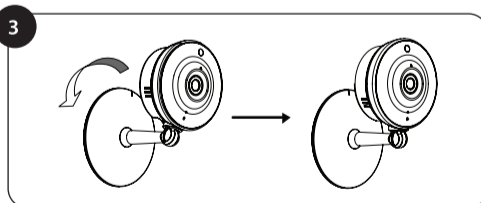


Position the mount on the wall as shown in the image. Take the three included screws and drill them into the holes.

Positionnez le support sur le mur comme indiqué sur l'image. Prenez les trois vis fournies et introduisez-les dans les trous.

Coloque el soporte sobre la pared como se muestra en la imagen. Tome los tres tornillos incluidos e insérteles con un taladro en los agujeros.

Halten Sie die Halterung wie in der Abbildung dargestellt an die Wand. Drehen Sie die drei beigefügten Schrauben in die Löcher.

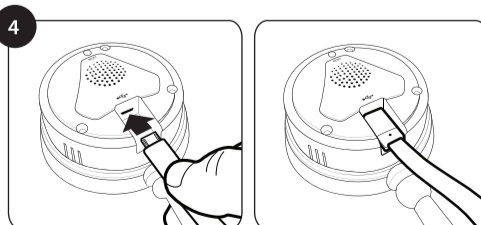


Insert mySight™ in the mount and then turn it counterclockwise to lock it in place.

Insérez mySight™ dans le support et tournez le dans le sens inverse des aiguilles d'une montre pour le fixer en place.

Introduzca mySight™ en el soporte y después gírelo en sentido contrario a las agujas del reloj para fijarlo en su lugar.

Setzen Sie mySight™ in die Halterung ein und drehen Sie es gegen den Uhrzeigersinn, um es zu fixieren.



Plug the Micro USB cable from the port at the back of mySight™ to an electrical outlet.

Branchez le câble USB Micro du port à l'arrière de mySight™ à une prise électrique.

Enchufa el cable Micro USB desde el puerto en la parte posterior de mySight™ a una toma eléctrica.

Verbinden Sie das im Port auf der Rückseite von mySight™ eingesteckte Micro-USB-Kabel mit einer Steckdose.

EN For information about our cloud recording service, please visit <http://www.iluv.com/iot/mysight.asp>

To purchase a cloud recording plan, sign in at <http://www.ivideon.com/> or purchase it directly on the Ivideon app: 1) Select a camera. 2) Click 3) Click "Manage" under Cloud Recording.

FN Pour plus d'informations concernant notre service d'enregistrement cloud, veuillez visiter le site <http://www.iluv.com/iot/mysight.asp>

Pour acheter un plan d'enregistrement cloud, connectez vous au <http://www.ivideon.com/> ou achetez le directement via l'application Ivideon : 1) Sélectionnez une caméra. 2) Cliquez sur 3) Cliquez sur "Gérer" sous l'onglet Enregistrement Cloud.

ES Para obtener información acerca de nuestro servicio de registro en la nube, por favor visita <http://www.iluv.com/iot/mysight.asp>

Para adquirir un plan de registro en la nube, regístrate en <http://www.ivideon.com/> o adquiérela directamente en la app de Ivideon: 1) Selecciona una cámara. 2) Haz clic en 3) Haz clic en "Administrar" debajo de Registro en la Nube.

DE Weitere Informationen zu unserem Cloud-Recording-Dienst sind unter <http://www.iluv.com/iot/mysight.asp> erhältlich.

Um einen Cloud-Recording-Plan zu bestellen, loggen Sie sich bei <http://www.ivideon.com/> ein oder tätigen Sie die Bestellung direkt in der Ivideon-App: 1) Wählen Sie eine Kamera. 2) Klicken Sie auf 3) Klicken Sie "Verwalten" unter Cloud Recording.

WARNING: Changes or modifications to this unit not expressly approved by the party responsible for compliance could void the user's authority to operate the equipment.

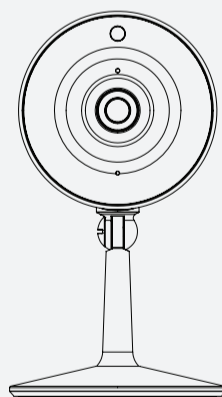
COMPLIES WITH FCC PART 15 RULES / COMPLIES WITH 21 CFR 1040.10 / COMPLIES WITH RSS-210 OF INDUSTRY CANADA

This Class B digital apparatus complies with CAN ICES-3 (B)/NMB-3(B) / Cet appareil numérique de la classe B est conforme à la norme CAN ICES-3 (B)/NMB-3(B).

The device complies with Part 15 of the FCC Rules. Operation is subject to the following two conditions: (1) this device may not cause harmful interference, and (2) this device must accept any interference received, including interference that may cause undesired operation.

NOTE: This equipment has been tested and found to comply with the limits for a Class B digital device, pursuant to Part 15 of the FCC Rules. These limits are designed to provide reasonable protection against harmful interference in a residential installation. This equipment generates, uses and can radiate radio frequency energy and, if not installed and used in accordance with the instructions, may cause harmful interference to radio communications. However, there is no guarantee that interference will not occur in a particular installation. If this equipment does cause harmful interference to radio or television reception, which can be determined by turning the equipment off and on, the user is encouraged to try to correct the interference by one or more of the following measures:

- Reorient or relocate the receiving antenna.
- Increase the separation between the equipment and receiver.
- Connect the equipment into an outlet on a circuit different from that to which the receiver is connected.
- Consult the dealer or an experienced radio/TV technician for help.



mySight™

Thank you for your purchase.
Visit our website at www.iluv.com or support.iluv.com for more information.
Please register your product at www.iluv.com/reg

iLuv®, and GreeNology® trademarks are the exclusive properties of jWIN Electronics Corp. and are registered with the U.S. Patent and Trademark Office, and may be registered or pending registration in other countries. All other iLuv® trademarks, service marks, and logos may be registered or pending registration in the U.S. or in other countries. The Bluetooth word mark and logos are owned by the Bluetooth SIG, Inc. iPad, iPhone, iPod are trademarks of Apple Inc., registered in the U.S. and other countries. All other trademarks or registered trademarks are the property of their respective owners. The illustrated product and specifications may differ slightly from that supplied. © 2015 iLuv Creative Technology. Printed in China.

iLuv Creative Technology
2 Harbor Park Drive, Port Washington, NY 11050